



## SonicWALL Continuous Data Protection Series

BACKUP AND RECOVERY

Real-time Data Backup and Recovery for Local and Offsite Protection

- Local continuous real-time data backup
- Hands-free offsite data backup
- Instant data recovery and file versions
- Robust data management and reporting
- Business application support
- Remote administration
- Bare metal recovery
- Local archiving
- Central management

The majority of IT Managers and Business Owners agree that tape does not work. Ironically, most organizations are still using fixed-schedule antiquated tape systems that are subject to human error, cumbersome to manage and are notoriously unreliable. Statistics show that:

- Over 30% of IT costs are associated with backup
- 20% of nightly tape-based backup jobs fail
- 40% of dedicated, full-time IT Managers can't recover data from their tape backups

The SonicWALL® Continuous Data Protection (CDP) Series resolves this problem with a complete, disk-based backup and recovery solution that meets the needs of organizations and remote offices. These backup and recovery appliances provide real-time, hassle-free, local backup, as well as hands-free offsite protection for servers, laptops and PCs. This reliable backup solution integrates a host of other features onto one centrally managed appliance to make it easier for IT Managers and business owners to protect their organization's most important asset—their data. And, since SonicWALL CDP only backs up block level differences within each file, the performance of the network is not impacted or compromised.

### Features and Benefits

**Local continuous real-time data backup** replicates data in real-time for servers, laptops and PCs, so that data can be recovered from any previous point in time. Even open files are protected with SonicWALL CDP.

**Hands-free Offsite Backup Service\*** ensures that critical data marked for offsite protection is sent to a secure data center. All data is transmitted and stored with AES 256-bit encryption.

**Instant data recovery and file versions** enable any user on the network to retrieve every version of the file, not just the latest version. Using a simple administration interface, users can go back to any point in time—minutes, hours, days or more.

**Robust data management tools** sit on a flexible search, command and reporting framework that provides detailed reports. Also included are e-mail alerts for real-time updates and offsite data storage visibility.

Seamless **support for databases and applications** is provided without the need to integrate third-party software modules. Common business applications include Quickbooks, PeachTree, ACT!, Goldmine, Exchange Server, SQL Server, Great Plains,

Solomon, Microsoft Active Directory, Microsoft applications such as: Navision, BizTalk, Business Contact Manager, CRM, InfoPath, Commerce Manager, Sharepoint, Project Server and MS Office products including Outlook and Outlook Express.

**Remote administration** allows IT administrators to manage SonicWALL CDP, recover deleted files or view vital statistics from a remote location. This feature saves valuable time and provides better user-level service.

**Bare metal recovery (BMR)\*** software creates an exact image of an entire server or workstation, including operating system files, programs, databases and settings. An entire system can be recovered in minutes.

BMR software includes **local archiving** capabilities that allow organizations to store snapshots of their data for extended periods of time. This feature is industry and government compliant and includes the ability to explore archives and restore individual files.

**Central management** allows administrators to set backup and recovery policies with an easy-to-use interface. Policies can be set at the network or user level.

\*Additional subscription service required.



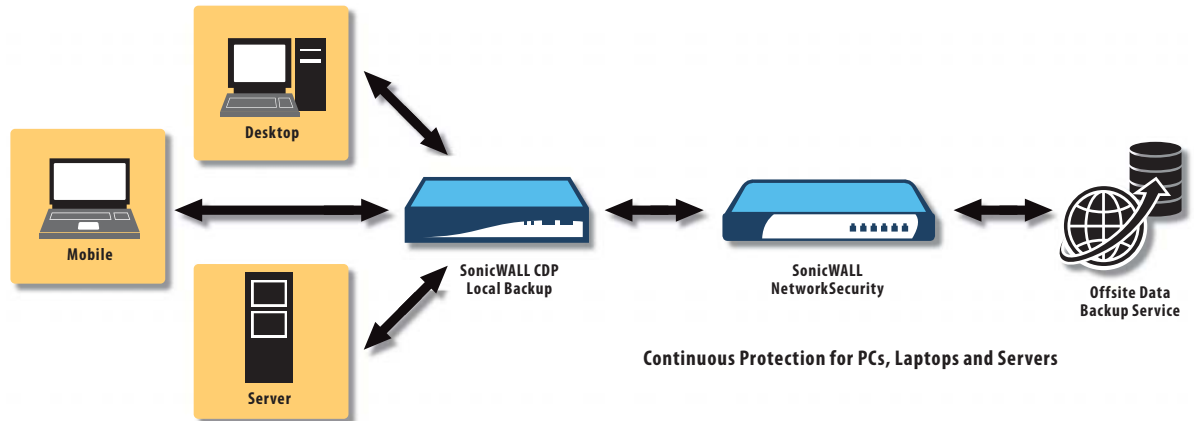
## SonicWALL Continuous Data Protection – How Does It Work?

The key components of the SonicWALL CDP solution are: the SonicWALL CDP appliance, the Enterprise Manager and the Agent Tool.

- SonicWALL CDP Appliance** – This dedicated disk-based backup appliance enables all the features and functions included with the product such as storage, file and application versioning, block level difference, offsite transmission and encryption. The SonicWALL CDP appliance can be centrally administered or configured from the Enterprise Manager.

- Enterprise Manager** – The SonicWALL CDP Enterprise Manager provides system activity monitoring and file-level visibility into all clients that are active on the CDP appliance. IT Administrators can recover files for customers from a remote location by using SonicWALL's SSL-VPN solution, enforce consistent backup policies and control features available to end users.
- Agent Tool** – The Agent Tool is installed on every laptop, PC or server that is connected to the CDP appliance. It provides configuration, status, monitoring, as well as file and disaster recovery for that machine. End-users can recover file versions through a simple user interface.

**Continuous  
real-time  
data protection  
with local  
and offsite  
backups**

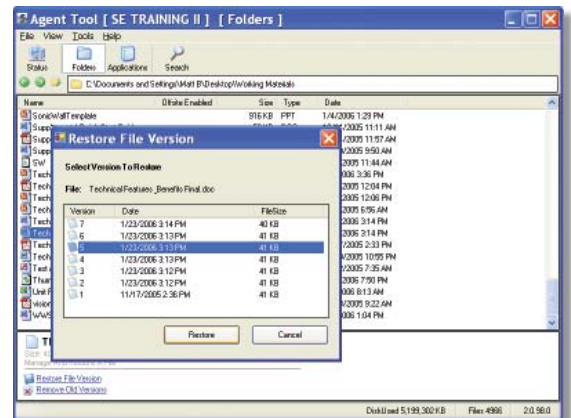


The SonicWALL CDP Series provides continuous real-time data protection for servers, laptops and PCs. Data is protected first locally to enable instant recovery, and then offsite at a secure data center for disaster recovery.



### Easy configuration of backup policies

Administrators can set policies to ensure certain files or applications are backed up. End-users can be given rights to retrieve their own data.



### Easy end-user data recovery

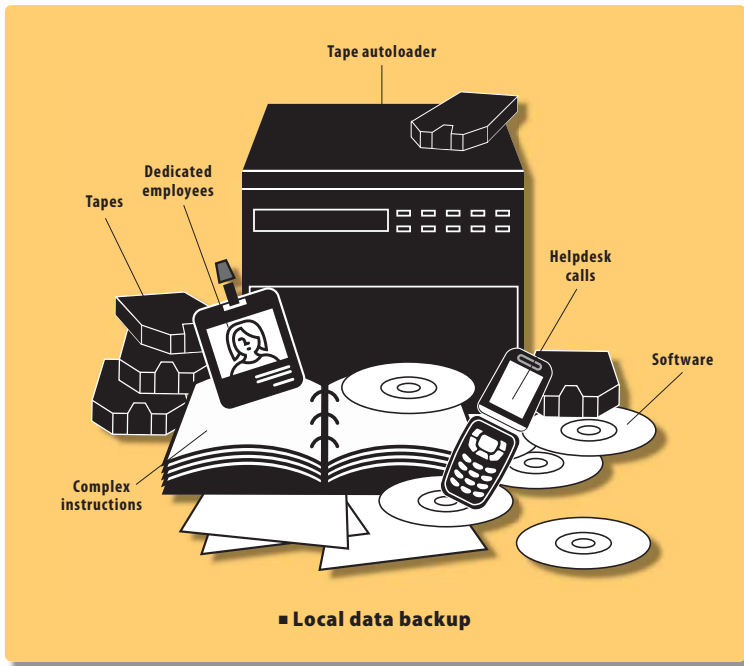
Version catalogs generated by SonicWALL CDP's continuous data protection technology provide for easy, instant, one-click recovery of data to minimize downtime.

**SonicWALL CDP Series vs. Tape, Disk and Offsite**

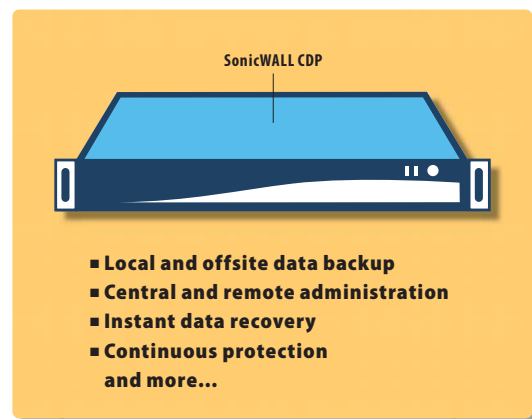
| Common Backup and Recovery Risks      | SonicWALL CDP Solution                                      |
|---------------------------------------|---|
| Requires manual intervention          | Automated and hassle-free                                   |
| Unprotected against local disasters   | Automatic offsite backup                                    |
| Limited security                      | AES 256-bit encryption                                      |
| Unreliable media (tapes)              | Reliable disk-based storage                                 |
| Complicated data recovery             | One-click recovery  |
| Susceptible to corruption and viruses | Enhanced compression and Linux kernel eliminates virus risk |
| Large backup windows                  | Continuous data protection                                  |
| Unprotected open files                | Open-file backup  |
| Difficult-to-use                      | Easy-to-use   |
| Point products or solutions           | All-in-one solution   |

**Reliability and Simplicity**

The SonicWALL CDP Series enables organizations to achieve complete data protection with the convenience of a single appliance. This comprehensive solution features secure automatic local and offsite protection, instant recovery and central/remote administration that enables organizations to increase productivity and decrease costs. Ultimately, SonicWALL CDP is easier to use and more reliable than traditional systems because it does not require integration or management of multiple point products.



**Complicated**



**Simple**

# Specifications



## SonicWALL CDP Series

SonicWALL CDP 1440i  
(US and Canada)  
01-SSC-6300

SonicWALL CDP 2440i  
(US and Canada)  
01-SSC-6301

SonicWALL CDP 3440i  
(US and Canada)  
01-SSC-6302

SonicWALL CDP 4440i  
(US and Canada)  
01-SSC-6303

(All CDP appliance ship with 90 days of 8x5 support and a one-year hardware warranty.)

## SonicWALL Continuous Data Protection Series

| Features   | CDP 1440i                   | CDP 2440i                   | CDP 3440i                         | CDP 4440i                     |
|--|-----------------------------|-----------------------------|-----------------------------------|-------------------------------|
| <b>Continuous Data Protection</b>                        | Yes                         | Yes                         | Yes                               | Yes                           |
| <b>File Versioning</b>                                   | Yes                         | Yes                         | Yes                               | Yes                           |
| <b>Central Administration</b>                            | Yes                         | Yes                         | Yes                               | Yes                           |
| <b>Desktop, Laptop, Server Backup</b>                    | Yes                         | Yes                         | Yes                               | Yes                           |
| <b>Remote Administration</b>                             | Yes                         | Yes                         | Yes                               | Yes                           |
| <b>Open-file Backup</b>                                  | Yes                         | Yes                         | Yes                               | Yes                           |
| <b>Policy Based Backup</b>                               | Yes                         | Yes                         | Yes                               | Yes                           |
| <b>Active Directory Backup</b>                           | –                           | Yes                         | Yes                               | Yes                           |
| <b>SQL Server Support</b>                                | –                           | Yes                         | Yes                               | Yes                           |
| <b>MS Exchange Support</b>                               | –                           | Yes                         | Yes                               | Yes                           |
| <b>Bare Metal Recovery/Local Archiving – Workstation</b> | Yes<br>(1 license bundled)  | Yes<br>(2 licenses bundled) | Yes<br>(5 licenses bundled)       | Yes<br>(10 licenses bundled)  |
| <b>Bare Metal Recovery/Local Archiving – Server</b>      | –                           | –                           | Yes<br>(1 license bundled)        | Yes<br>(2 licenses bundled)   |
| Technology   | CDP 1440i                   | CDP 2440i                   | CDP 3440i                         | CDP 4440i                     |
| <b>Core Compression Technology</b>                       | Standard                    | Standard                    | Enhanced                          | Enhanced                      |
| <b>Encryption</b>  | AES 256-bit                 | AES 256-bit                 | AES 256-bit                       | AES 256-bit                   |
| <b>Throughput</b>  | Standard                    | Standard                    | Accelerated                       | Accelerated                   |
| Capacity   | CDP 1440i                   | CDP 2440i                   | CDP 3440i                         | CDP 4440i                     |
| <b>Users (recommended)</b>                               | 15 or fewer                 | 30 or fewer                 | 75 or fewer                       | Unlimited                     |
| <b>Servers (recommended)</b>                             | 3                           | 5                           | Unlimited                         | Unlimited                     |
| <b>Capacity Base Compressed*</b>                         | 160 GB<br>192 GB            | 250 GB<br>300 GB            | 400 GB<br>800 GB                  | 600 GB<br>1.2 TB              |
| Hardware   | CDP 1440i                   | CDP 2440i                   | CDP 3440i                         | CDP 4440i                     |
| <b>Chassis</b>   | Mini                        | Mini                        | 1U rack-mountable                 | 2U rack-mountable             |
| <b>RAID</b>  | –                           | –                           | RAID 1                            | RAID 5                        |
| <b>Interface</b>   | 1 x 10/100 Base-T Ethernet  | 1 x 10/100 Base-T Ethernet  | 10/100/1000 GIG LAN               | 10/100/1000 GIG LAN           |
| <b>Power Supply</b>                                      | Built-in 60W DC power board | Built-in 60W DC power board | Thermal Control 260 W AC with PFC | 400W AC Power Supply with PFC |
| <b>Input</b>   | (AC 100 ~ 240 V)            | (AC 100 ~ 240 V)            | (AC 100 ~ 240 V, 60-50Hz, 5A)     | (AC 100 ~ 240 V, 60-50Hz, 5A) |
| <b>Output</b>  | (DC 12V, 5A)                | (DC 12V, 5A)                | (DC 5V + 3.3V)                    | (DC 5V + 3.3V)                |
| <b>Fans</b>  | 2 x 40 mm cooling fans      | 2 x 40 mm cooling fans      | 1 x 100 mm 5000 rpm fan           | 3 x 80 mm ball-bearing fans   |
| <b>Dimensions</b>  | 11.5 x 10.75 x 2.5 in       | 11.5 x 10.75 x 2.5 in       | 16.8 x 14.0 x 1.7 in              | 19.0 x 25.3 x 3.5 in          |
| <b>Weight</b>  | 10 lbs                      | 10 lbs                      | 20 lbs                            | 43 lbs                        |

\* Product capacity specified in gigabytes (GB) and terabytes (TB) where 1 GB = 1,000,000,000 bytes and 1 TB = 1,000,000,000,000 bytes. Compressed capacity assumes 1.2:1 for standard data compression and 2:1 for enhanced data compression. Capacity may vary and is data dependent.

For more information on SonicWALL backup and recovery solutions, please visit our Web site at [http://www.sonicwall.com/products/us/backup\\_and\\_recovery.html](http://www.sonicwall.com/products/us/backup_and_recovery.html).

### SonicWALL, Inc.

1143 Borregas Avenue  
Sunnyvale CA 94089-1306

T +1 408.745.9600  
F +1 408.745.9300

[www.sonicwall.com](http://www.sonicwall.com)

